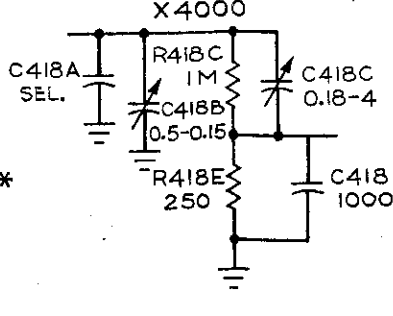
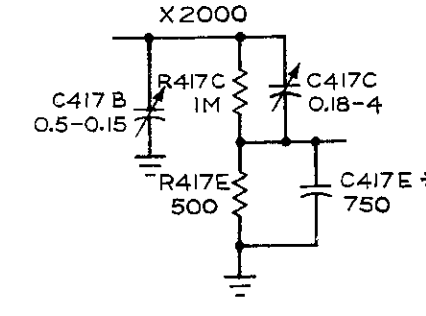
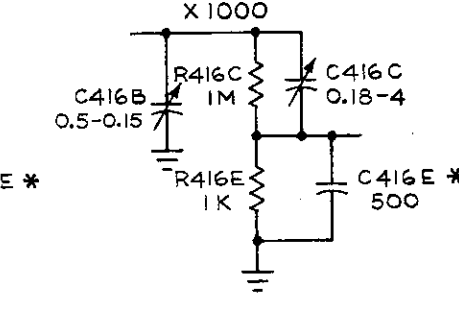
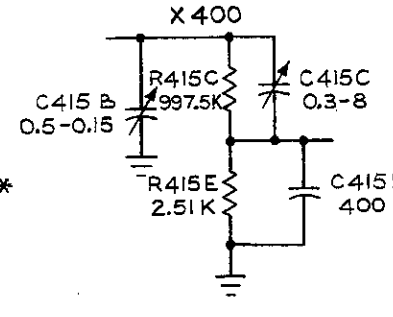
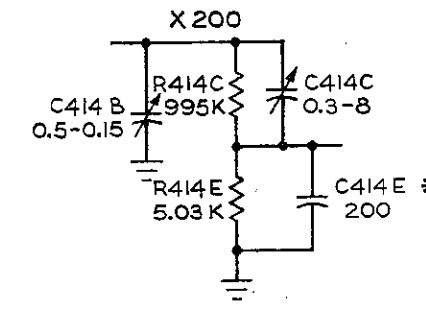
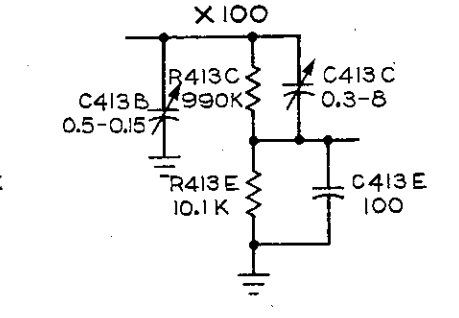
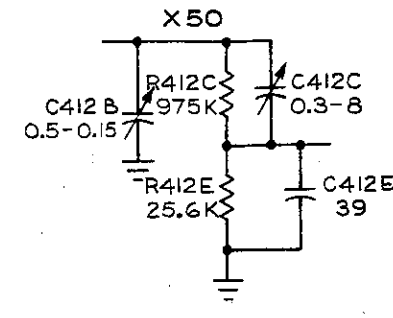
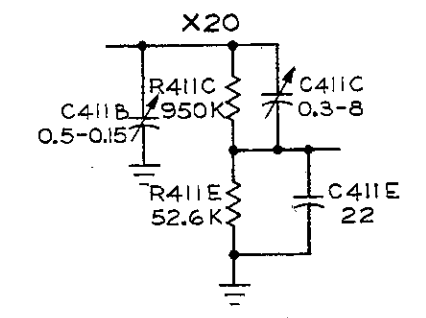
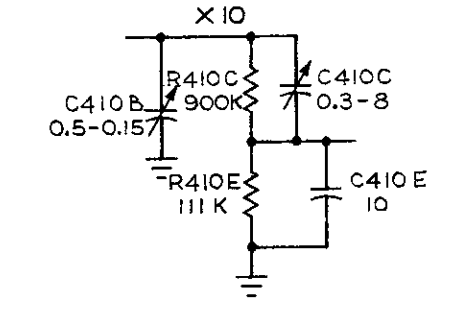
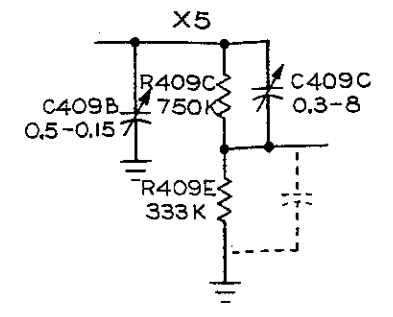
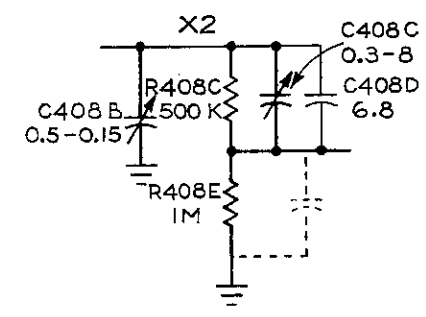


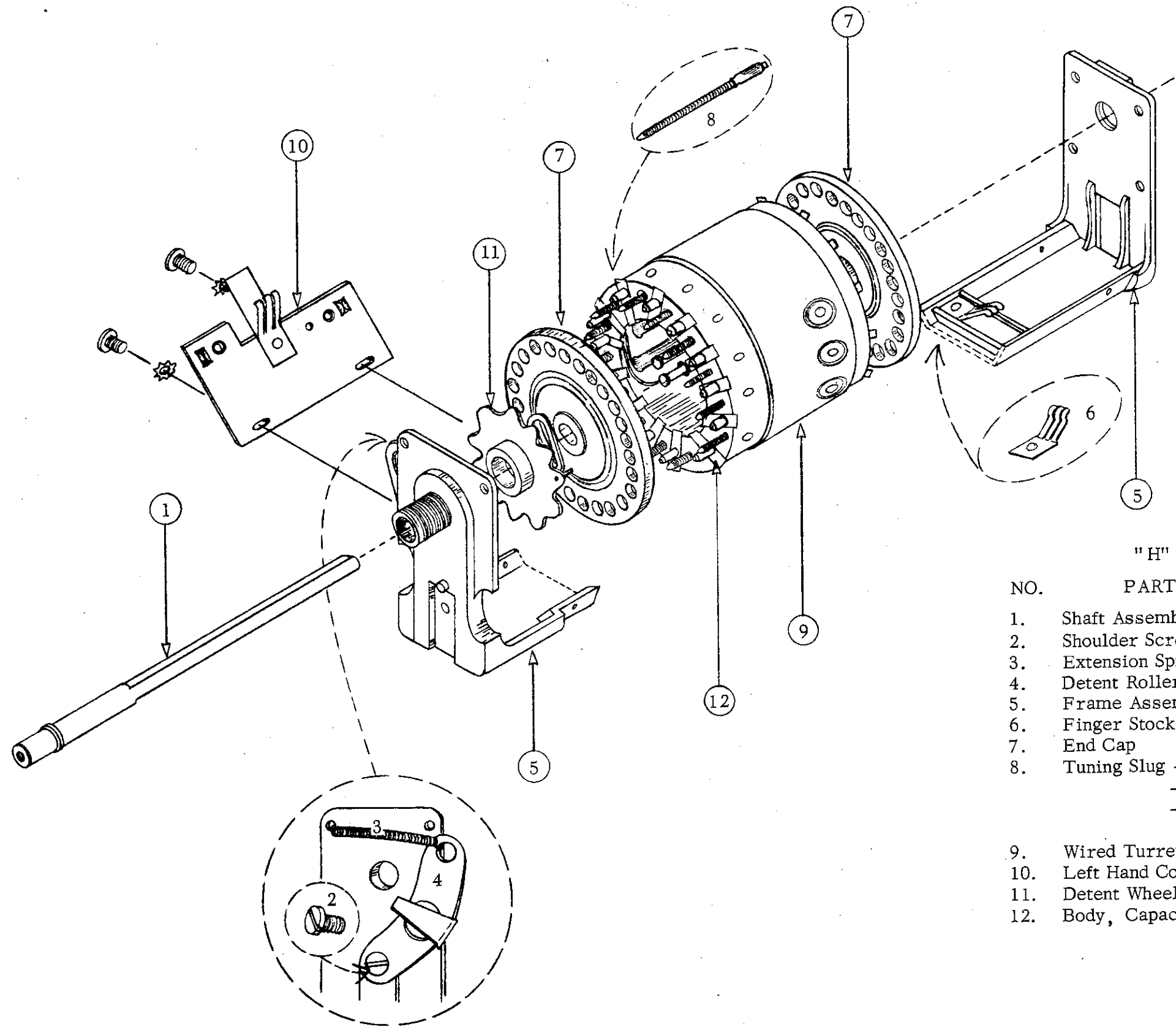
X1



* SILVERED MICA BUTTON CAPACITORS.

AC

H TURRET ATTENUATOR
S/N 10,001 -UP

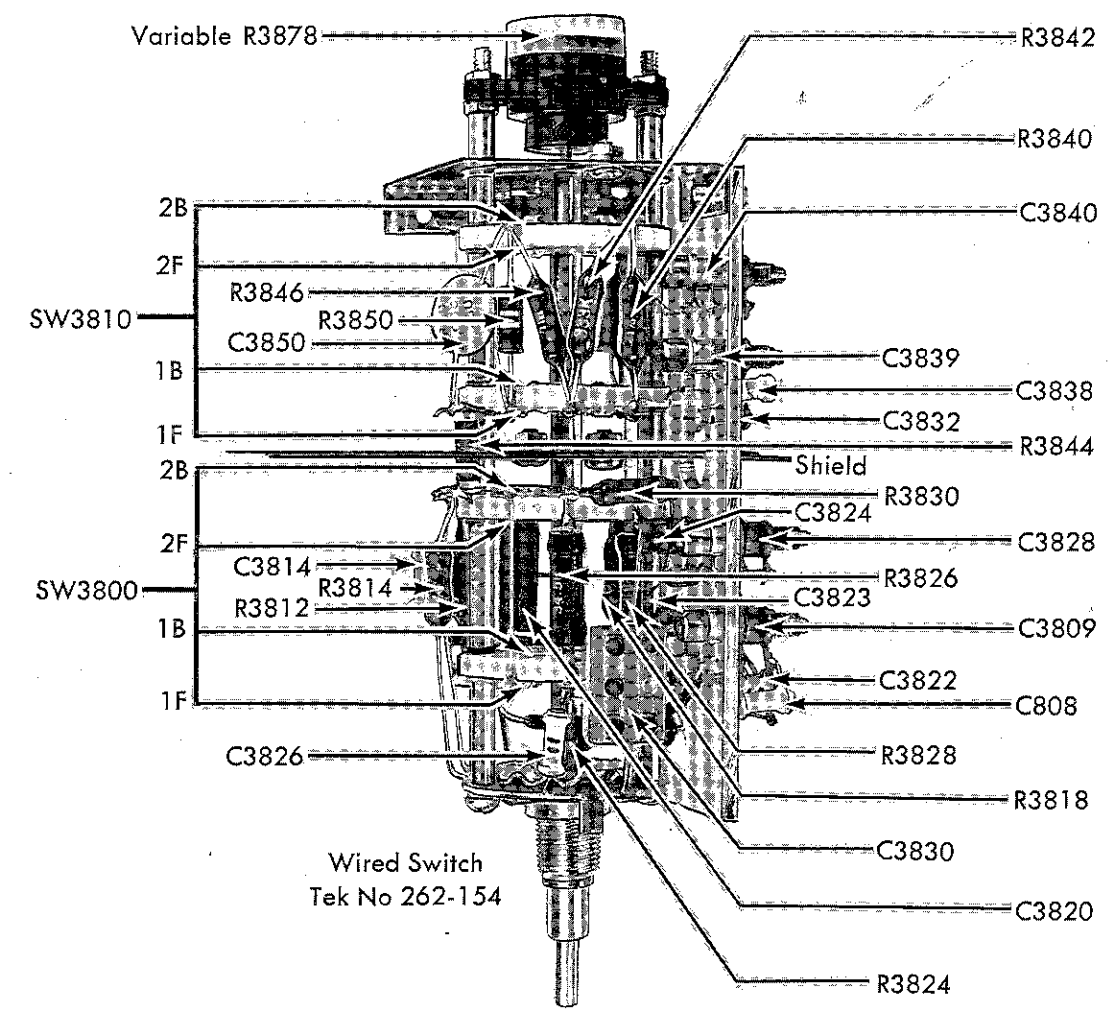


"H" Unit Turret Attenuator

NO.	PART	TEKTRONIX PART NO.
1.	Shaft Assembly	384-235
2.	Shoulder Screw	211-563
3.	Extension Spring	214-088
4.	Detent Roller Carrier Assembly	214-189
5.	Frame Assembly	426-125
6.	Finger Stock	214-131
7.	End Cap	200-191
8.	Tuning Slug - Gold .008 Teflon	214-216
	- Silver .004 Teflon	214-217
	- Gold 1/2 length, no Teflon	Supplied on Request
9.	Wired Turret Body Assembly	204-072
10.	Left Hand Contact Plate Assembly	387-423
11.	Detent Wheel Assembly	401-020
12.	Body, Capacitor Barrel	204-024

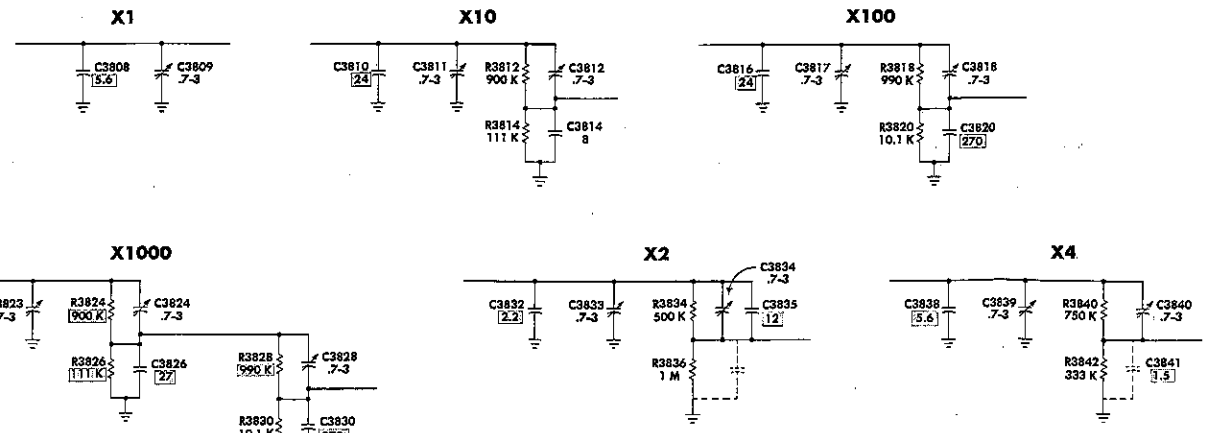
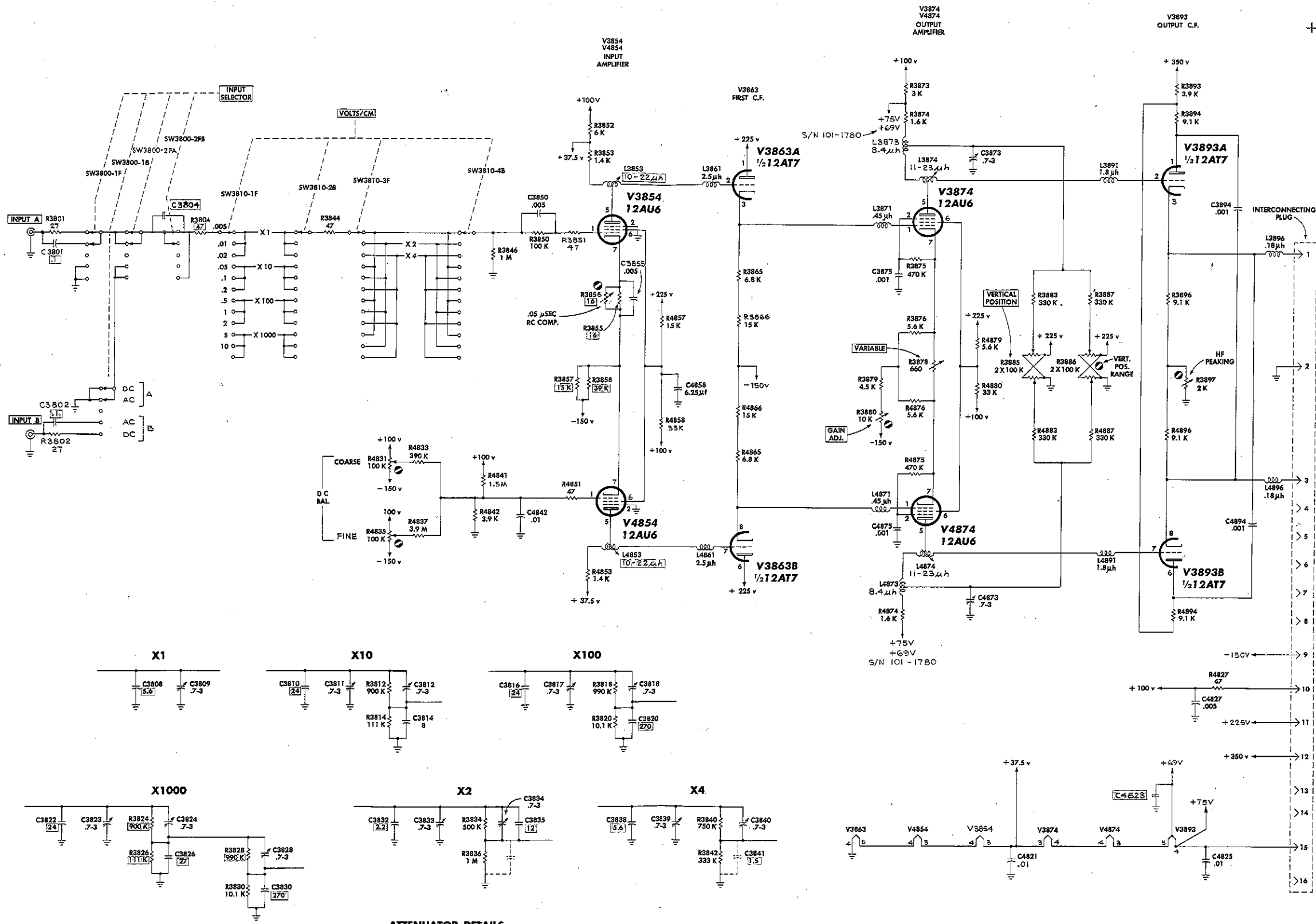
A

384
384
384
383
384
382
TURRET DRAWING



VOLTS/CM SWITCH AND VARIABLE CONTROL

SWITCH DETAIL



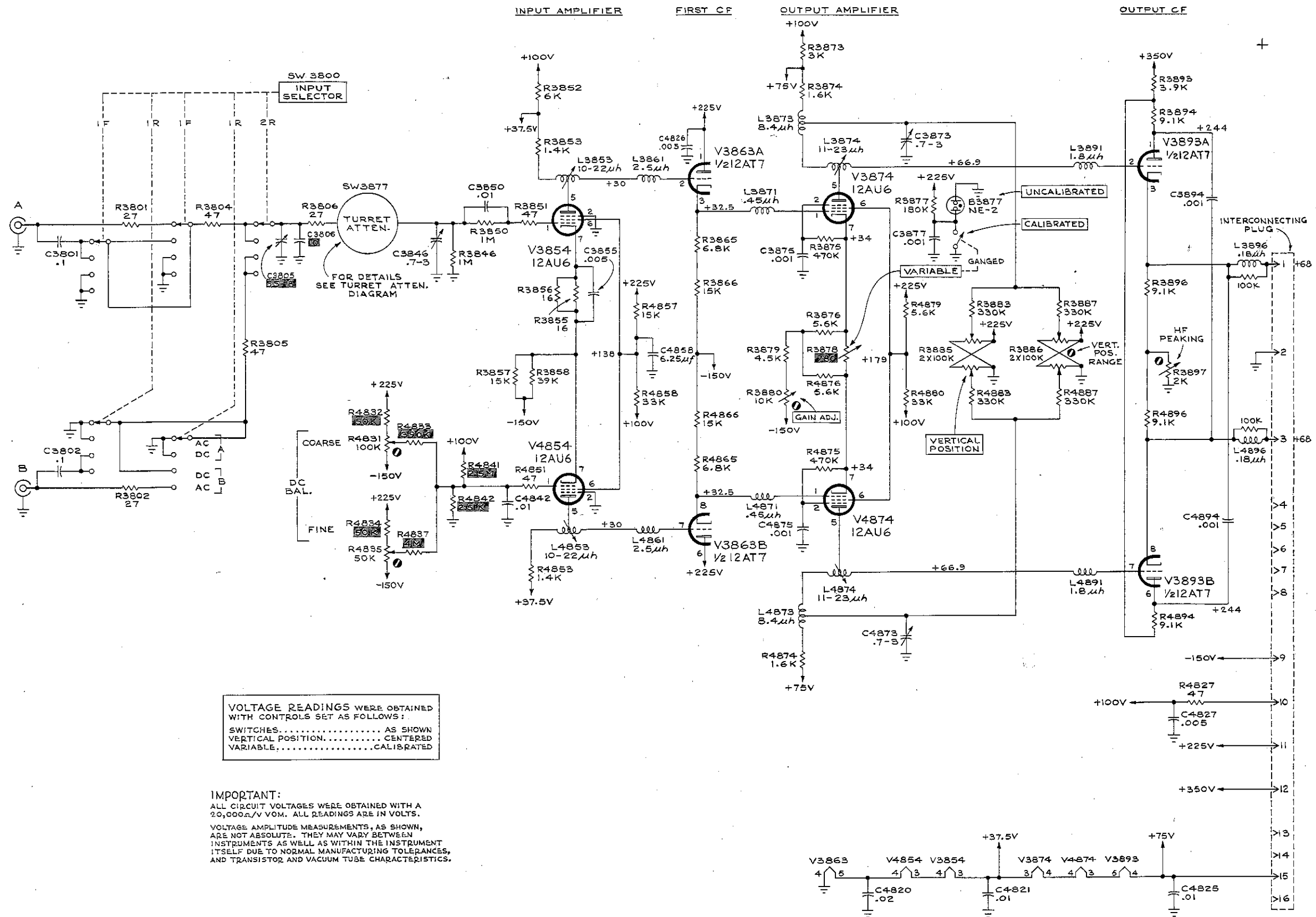
ATTENUATOR DETAILS

SEE PARTS LIST FOR EARLIER VALUES AND S/N CHANGES OF PARTS MARKED []

2-16-61

TYPE H PREAMP
S/N 101-10,000

AA₁



VOLTAGE READINGS WERE OBTAINED WITH CONTROLS SET AS FOLLOWS:
 SWITCHES..... AS SHOWN
 VERTICAL POSITION..... CENTERED
 VARIABLE..... CALIBRATED

IMPORTANT:
 ALL CIRCUIT VOLTAGES WERE OBTAINED WITH A 20,000Ω/V VOM. ALL READINGS ARE IN VOLTS.
 VOLTAGE AMPLITUDE MEASUREMENTS, AS SHOWN, ARE NOT ABSOLUTE. THEY MAY VARY BETWEEN INSTRUMENTS AS WELL AS WITHIN THE INSTRUMENT ITSELF DUE TO NORMAL MANUFACTURING TOLERANCES, AND TRANSISTOR AND VACUUM TUBE CHARACTERISTICS.

SEE PARTS LIST FOR EARLIER VALUES AND S/N CHANGES OF PARTS MARKED WITH RED TINT BLOCKS

AD₃

MRH
 10-12-61
TYPE H PREAMP
 S/N 10,001-UP

PREAMPLIFIER
 S/N 10001-UP